

4 ALBERT EMBANKMENT  
LONDRES SE1 7SR

Téléphone : +44 (0)20 7735 7611

Télécopieur : +44(0)20 7587 3210

Lettre circulaire n° 4577  
30 mai 2022

Destinataires : Tous les Membres de l'OMI  
Organisations intergouvernementales  
Organisations non gouvernementales bénéficiant du statut consultatif

Objet : **Communication du Gouvernement de la Fédération de Russie**

Le Gouvernement de la Fédération de Russie a envoyé la communication ci-jointe\*, datée du 26 mai 2022, en demandant qu'elle soit diffusée par l'Organisation.

\*\*\*

---

\* En anglais seulement.



MISSION OF  
THE RUSSIAN FEDERATION  
TO THE INTERNATIONAL MARITIME  
ORGANIZATION (IMO)



ПРЕДСТАВИТЕЛЬСТВО  
РОССИЙСКОЙ ФЕДЕРАЦИИ  
ПРИ МЕЖДУНАРОДНОЙ МОРСКОЙ  
ОРГАНИЗАЦИИ (ИМО)

Address: 37 Harrington Gardens,  
London SW7 4JU

Адрес: 37 Харрингтон Гарденс,  
Лондон SW7 4JU

Telephone : +44 (0) 20 7 370 67 68 / 64  
E-mail : [postpred@mintrans.ru](mailto:postpred@mintrans.ru)

Телефон : +44 (0) 20 7 370 67 68 / 64  
Эл.почта : [postpred@mintrans.ru](mailto:postpred@mintrans.ru)

---

Ref. No. 003/216

The Mission of the Russian Federation to the International Maritime Organization (IMO) presents its compliments to the Secretary-General of the IMO and with reference to the Mission's Note No. 003/124 of 25 March informing of the establishment by the Russian side of a humanitarian maritime corridor in the Black Sea pursuant to the outcomes of the 35<sup>th</sup> Council's extraordinary session, as represented in C/ES/35/D, in particular its paragraph 3.2, on the "establishment, as a provisional and urgent measure, of a blue safe maritime corridor to allow safe evacuation of seafarers and ships" would like to submit the following.

Encl.:  
1 page

The route of the aforementioned humanitarian maritime corridor in the Black Sea providing for the safe passage of merchant vessels from the ports of the Ukraine (ports of Chernomorsk, Kherson, Mykolaiv, Ochakov, Odessa and Yuzhne) will be altered due to safety considerations starting from 27 May 2022 (please, find sketch-map enclosed).

This extended corridor will stretch for 139 miles and will be 3-mile wide. It will operate daily from 8 a.m. till 7 p.m. (UTC+3).

**H.E. Mr. Kitack Lim**  
**Secretary-General**  
**International Maritime Organization**  
**4 Albert Embankment, London SE1 7SR**

The coordinates for the assembly area (RC-1) will be as follows:

46° 09' N      31° 00' E

46° 09' N      31° 08' E

46° 04' N      31° 08' E

46° 04' N      31° 00' E.

The coordinates for the turning point №1:

45° 40' N      31° 35' E

The coordinates for the turning point №2:

45° 08' N      31° 35' E

The coordinates for the turning point №3:

44° 18' N      30° 22' E

The coordinates for the exit area (RR-2) will be as follows:

44° 18' N      30° 18' E

44° 18' N      30° 26' E

44° 13' N      30° 26' E

44° 13' N      30° 18' E.

The Russian side repeatedly calls on competent authorities of the Ukraine to provide for the safety and security of the merchant vessels and their crews transiting to the assembly area (RC-1).

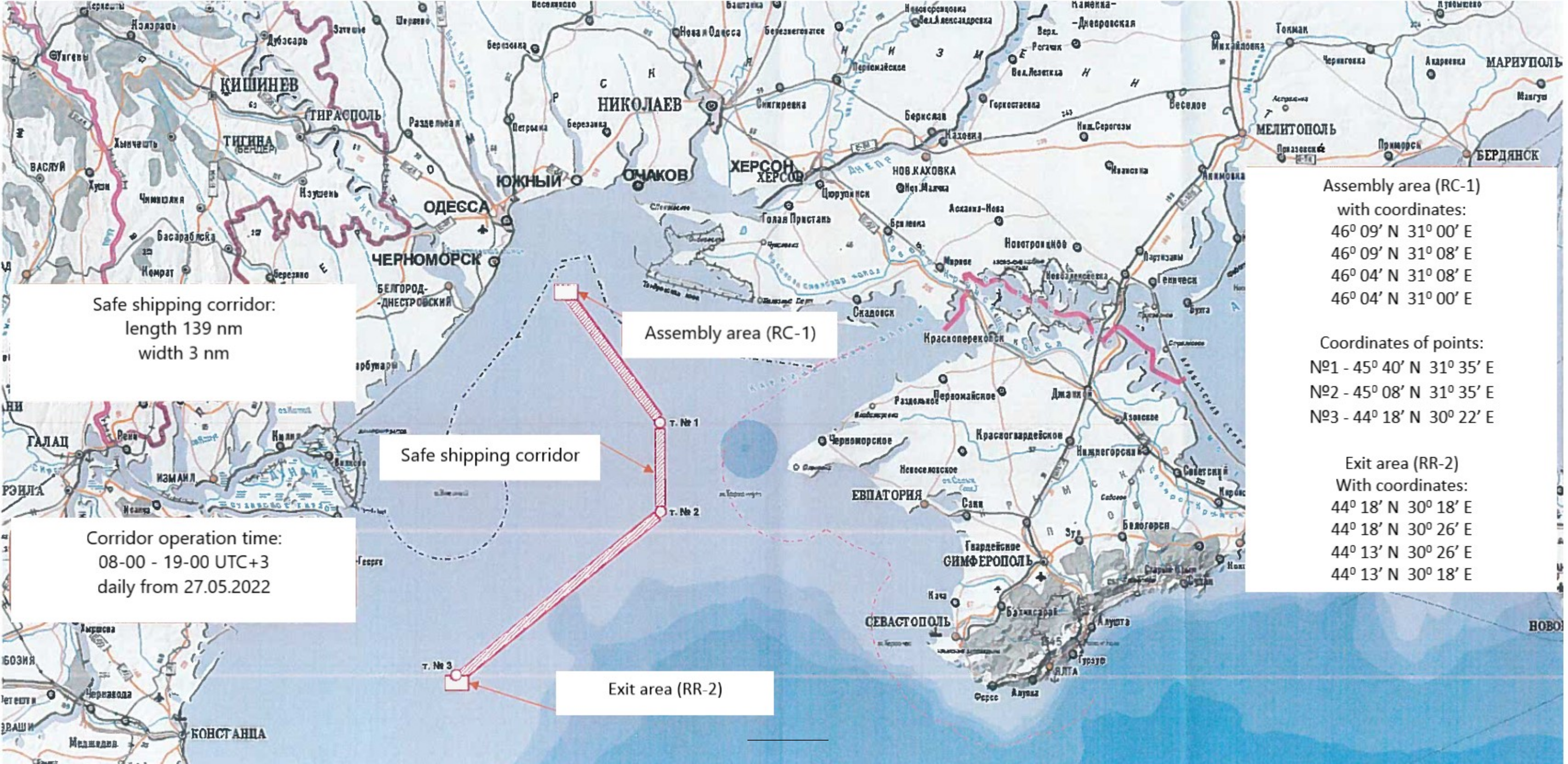
The Russian side seeks the kind support of the Secretary-General of the IMO in implementing this urgent measure as indicated by the Council at its 35<sup>th</sup> extraordinary session and kindly asks for this letter to be circulated to the IMO Member States and International Organizations.

The Mission of the Russian Federation avails itself of the opportunity to renew to the Secretary-General of the International Maritime Organization the assurances of its highest consideration.



London, 26 May 2022





Safe shipping corridor:  
length 139 nm  
width 3 nm

Assembly area (RC-1)

Safe shipping corridor

Exit area (RR-2)

Corridor operation time:  
08-00 - 19-00 UTC+3  
daily from 27.05.2022

Assembly area (RC-1)  
with coordinates:  
46° 09' N 31° 00' E  
46° 09' N 31° 08' E  
46° 04' N 31° 08' E  
46° 04' N 31° 00' E

Coordinates of points:  
№1 - 45° 40' N 31° 35' E  
№2 - 45° 08' N 31° 35' E  
№3 - 44° 18' N 30° 22' E

Exit area (RR-2)  
With coordinates:  
44° 18' N 30° 18' E  
44° 18' N 30° 26' E  
44° 13' N 30° 26' E  
44° 13' N 30° 18' E