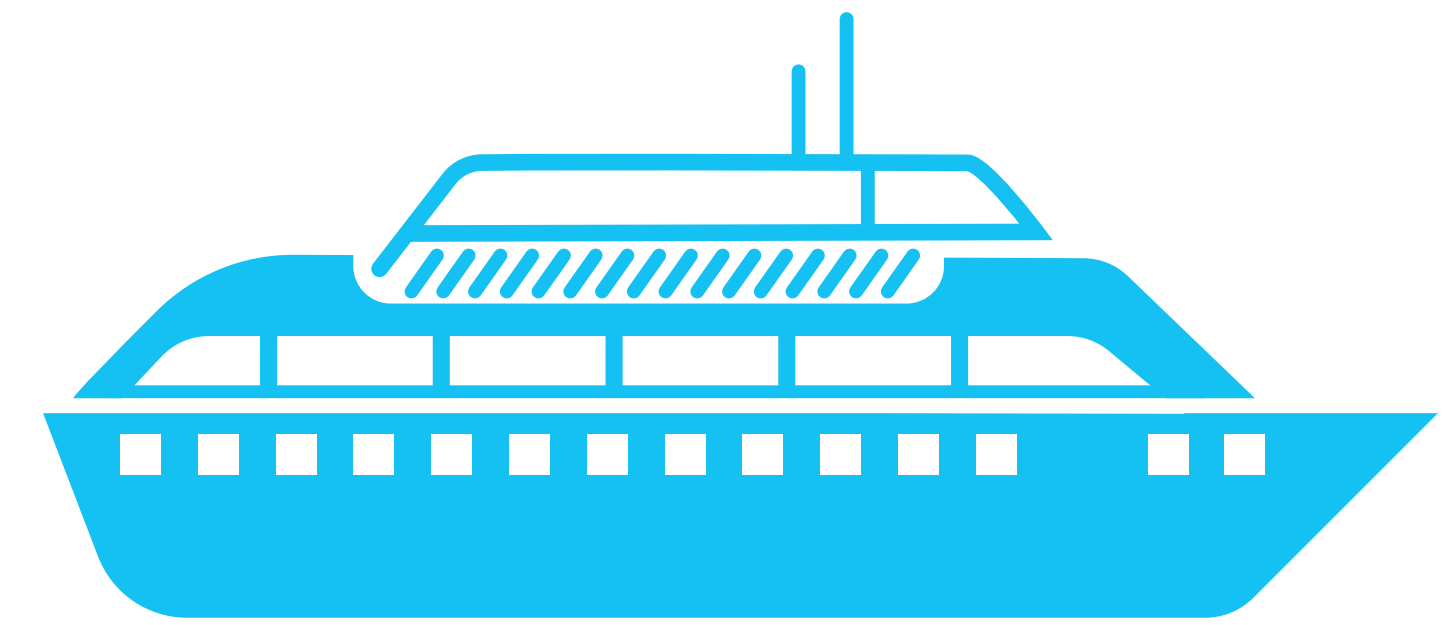
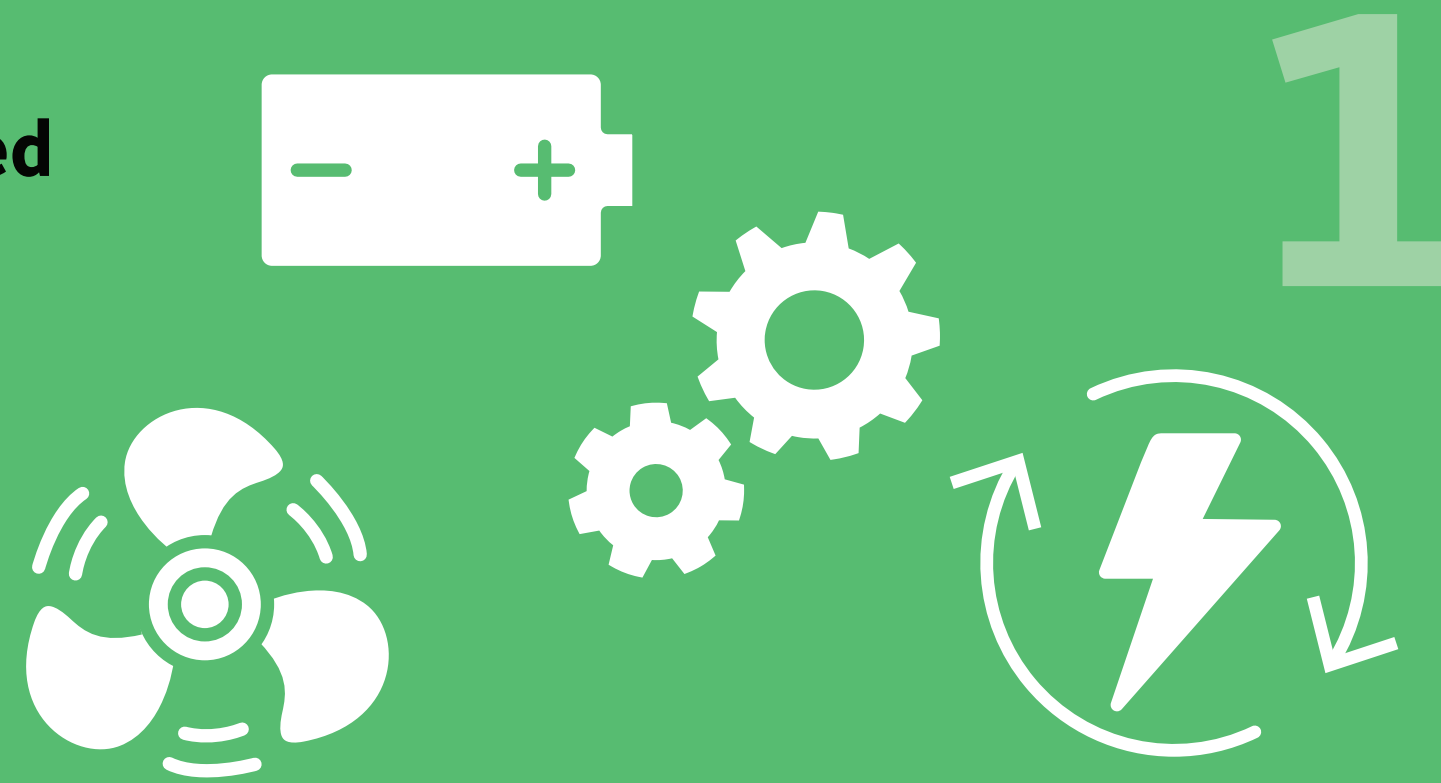


EEDI

ENERGY EFFICIENCY DESIGN INDEX
IMPROVING THE TECHNICAL
PERFORMANCE OF NEW BUILD SHIPS



Ships which are **designed and constructed today** must be **MORE ENERGY EFFICIENT** than the baseline, thus reducing their carbon intensity



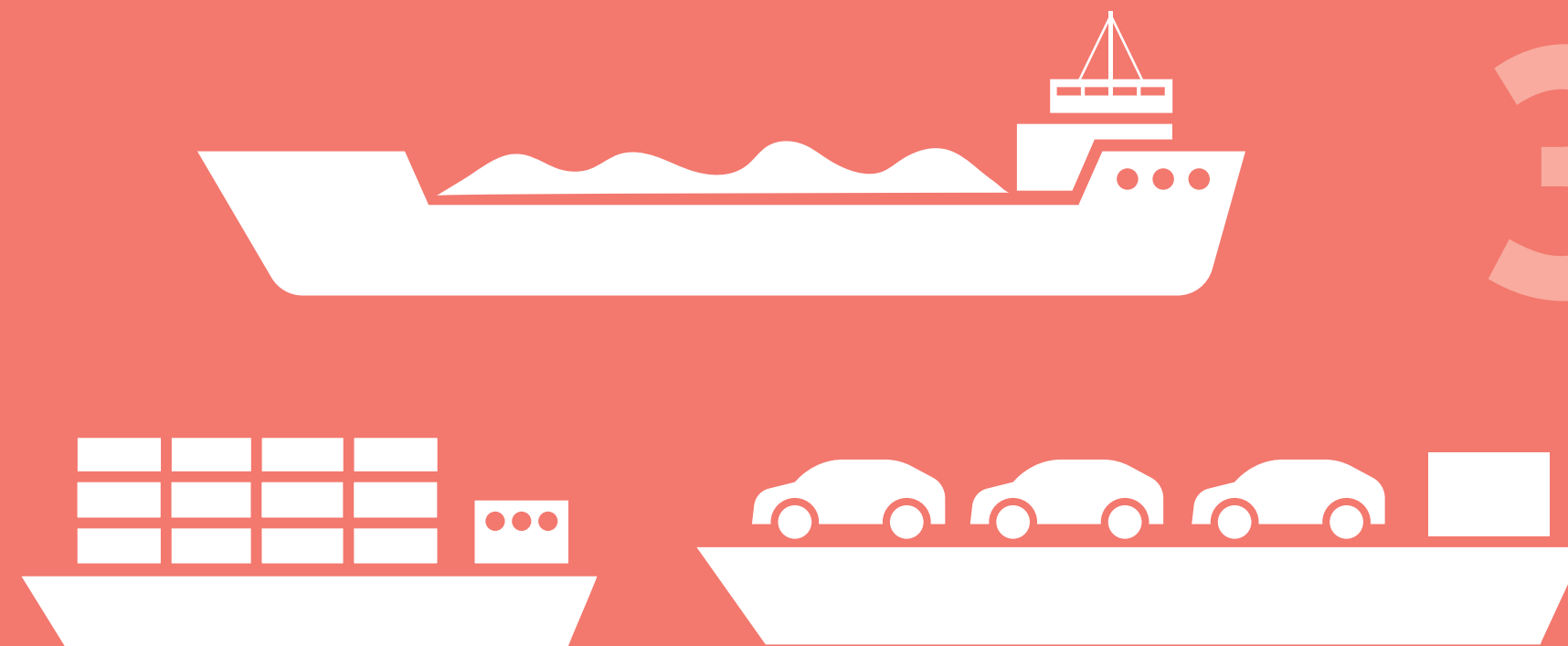
1

Performance targets are increasingly stringent over time, thus **INCENTIVIZING INNOVATION** in ship design



2

There are **DIFFERENT GOALS FOR DIFFERENT TYPES OF SHIPS**, recognizing the specificities of different types of ships



3

For example, **THE LARGEST CONTAINER SHIPS (>200,000 DWT)** built after 1 April 2022 **must be 50% more efficient** than the baseline



4