

RESOLUTION MSC.315(88)
(adopted on 29 November 2010)
AMENDMENTS TO THE EXISTING MANDATORY SHIP REPORTING SYSTEM "IN THE
TORRES STRAIT REGION AND THE INNER ROUTE OF THE GREAT BARRIER REEF"
(REEFREP)

ANNEX 14

RESOLUTION MSC.315(88) (adopted on 29 November 2010)

AMENDMENTS TO THE EXISTING MANDATORY SHIP REPORTING SYSTEM "IN THE TORRES STRAIT REGION AND THE INNER ROUTE OF THE GREAT BARRIER REEF" (REEFREP)

THE MARITIME SAFETY COMMITTEE,

RECALLING Article 28(b) of the Convention on the International Maritime Organization concerning the functions of the Committee,

RECALLING ALSO regulation V/11 of the International Convention for the Safety of Life at Sea, 1974, as amended (SOLAS Convention), in relation to the adoption of mandatory ship reporting systems by the Organization,

RECALLING FURTHER resolution A.858(20), resolving that the function of adopting ship reporting systems shall be performed by the Committee on behalf of the Organization,

TAKING INTO ACCOUNT the Guidelines and criteria for ship reporting systems adopted by resolution MSC.43(64), as amended by resolutions MSC.111(73) and MSC.189(79),

HAVING CONSIDERED the recommendations of the Sub-Committee on Safety of Navigation, at its fifty-sixth session,

1. ADOPTS, in accordance with SOLAS regulation V/11, the amendments to the existing mandatory ship reporting system "In the Torres Strait region and the Inner Route of the Great Barrier Reef" (REEFREP), as described in the annex of this resolution;
2. DECIDES that the amendments to this existing mandatory ship reporting system will enter into force at 0000 hours UTC on 1 July 2011;
3. REQUESTS the Secretary-General to bring this resolution and its annex to the attention of Contracting Governments to the SOLAS Convention and to members of the Organization.

ANNEX

**AMENDMENTS TO THE EXISTING MANDATORY SHIP REPORTING SYSTEM
"IN THE TORRES STRAIT REGION AND THE INNER ROUTE OF THE GREAT
BARRIER REEF" (REEFREP)**

ANNEX 1 OF RESOLUTION MSC.52(66), AS AMENDED BY RESOLUTION MSC.161(78)

1 In Annex 1, paragraphs 2.1 and 2.2 are replaced by the following paragraphs:

"2.1 The reporting system will cover the general area, as shown in the chartlet at appendix 1. The area encompasses the Torres Strait between longitudes 141° 45' E and 144° 00' E, including the Endeavour Strait, and the waters of the Great Barrier Reef (GBR) between the Australian coast and the outer edge of the GBR, from the latitude of Cape York (10° 40' S) south-eastwards to 21° 00' S 152° 55' E. From this position, the REEFREP boundary extends as follows:

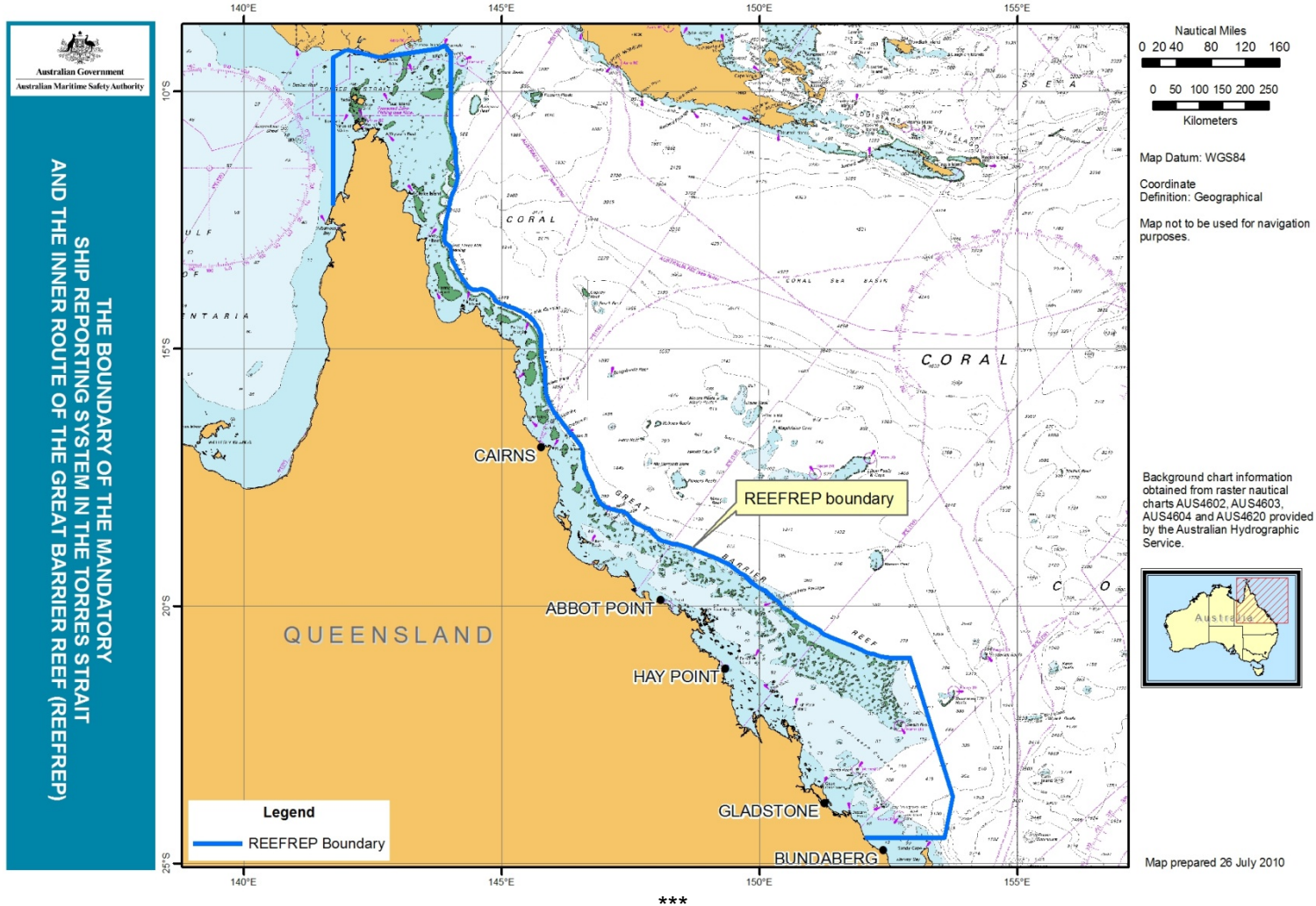
- (a) to position 23° 42' S 153° 45' E,
- (b) thence to position 24° 30' S 153° 35' E,
- (c) thence westward on latitude 24° 30' S to its intersection with the Queensland coastline at the low water mark, and
- (d) thence generally north-westerly along the coastline to the latitude of Cape York (10° 40' S).

2.2 The REEFREP area is shown on charts AUS 4620 (1996) and AUS 4635 (2010). A series of large scale charts is provided for coastal navigation throughout the REEFREP area."

2 Appendix 1 is replaced with the following:

Appendix 1

GENERAL AREA COVERED BY THE REPORTING SYSTEM



RESOLUTION MSC.315(88)
(adopted on 29 November 2010)
AMENDMENTS TO THE EXISTING MANDATORY SHIP REPORTING SYSTEM "IN THE
TORRES STRAIT REGION AND THE INNER ROUTE OF THE GREAT BARRIER REEF"
(REEFREP)