



# PHILIPPINES

## Responses to COVID-19 Pandemic

---

**"Challenges faced by seafarers and  
identification of best practices during  
the COVID-19 pandemic in Asia"**

**4 and 5 November 2020**

# STATE OF THE SHIPPING INDUSTRY

---

Around 100,000 ships carry almost 95% of the world's trade.

These ships are operated by close to 1.5 Million seafarers; around 378,000 of which are Filipinos.





# STATE OF THE SEAFARING INDUSTRY

Like doctors and nurses, seafarers have continued to work day and night while combatting fear, anxiety and great risk to their own health to keep the world trade afloat.



**#SeafarersAreKeyWorkers**

# POLICY ISSUANCES

Two (2) out of 75 Advisories issued by the MARINA focused on the following:

## **MARINA Advisory 2020-66:**

“Further Extension of the Validity of STCW Certificates as a Temporary Contingency Measure Amidst the COVID-19 Pandemic”

## **MARINA Advisory 2020-67:**

“Extending the Coverage of Expiring SIRB/SRB for Seafarers Currently Onboard Ships and Ashore Operating both in Domestic and Overseas”



DOTMARINAPH



<https://marina.gov.ph>





Pursuant to MARINA Advisory 2020-59, Maritime Training Institutions (MTIs) and Assessment Centers (ACs) who are authorized to conduct STCW Mandatory Training Courses after the Enhanced Community Quarantine (ECQ) are informed of the following:

1. MARINA approved courses shall be delivered through a **Blended Learning Mode of training**, which makes use of Face to Face and e-Learning platforms. Guidelines for the conduct of Blended Learning is provided in Annex A while a checklist to record compliance with the guidelines is provided in Annex B.
2. Applications including the self-assessment column of the checklist from Annex B and other documents shall be submitted to the Accreditation Division of the MARINA-STCW Office through email: [stcw\\_accr@marina.gov.ph](mailto:stcw_accr@marina.gov.ph).
3. MTIs may conduct the Blended Learning Mode of training once they receive a receipt of an acknowledgement from the Office of the Executive Director through the Accreditation Division.
4. MTIs whose applications are approved are granted a provisional authority valid for (6) months or until full face-to-face conduct of classes is allowed.

## ACTIONS TAKEN BY THE PHILIPPINES

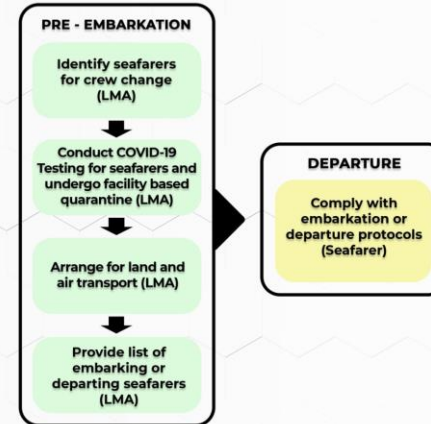
MARINA has issued additional guidelines on the conduct of training programs via **'Blended Learning'** mode during General Community Quarantine (GCQ), as a response to the need to provide a platform for our seafarers to complete their required training who may have been directly impacted as a result of quarantine lockdowns that prevented Maritime Training Institutions (MTIs) to deliver their programs face-to-face.

# ACTIONS TAKEN BY THE PHILIPPINES

The Department of Transportation (DOTr) issued the **Philippine Protocol on Crew Change and Repatriation of Seafarers**, which contains the detailed procedures and health and safety protocols for repatriation and the conduct of crew change, both in domestic and international ports.

## PROCEDURES FOR FILIPINO SEAFARERS JOINING A SHIP IN THE PHILIPPINES OR OVERSEAS

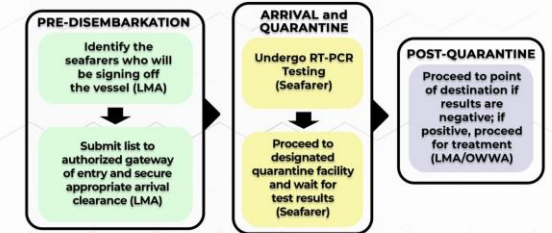
All outbound Filipino seafarers must comply with the established health and safety protocols of the Philippines for COVID-19.



DOT-MARINAPH marina.gov.ph

## PROCEDURES FOR FILIPINO SEAFARERS FOR LEAVING A SHIP

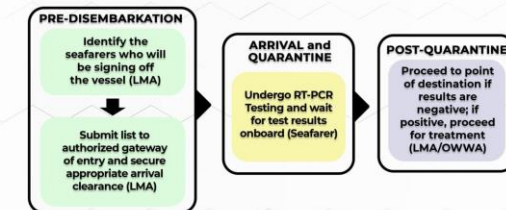
All inbound Filipino seafarers must comply with the established quarantine protocols of the Philippines for COVID-19.



DOT-MARINAPH marina.gov.ph

## SPECIAL PROCEDURES FOR FILIPINO SEAFARERS LEAVING A CRUISE SHIP DOCKED IN PHILIPPINE SEAPORTS

All inbound Filipino seafarers must comply with the established quarantine protocols of the Philippines for COVID-19.



DOT-MARINAPH marina.gov.ph

## ACTIONS TAKEN BY THE PHILIPPINES

Philippines has communicated recently to the International Maritime Organization (IMO) the Philippine Guidelines for the establishment of the **Philippines Green Lane** to facilitate the speedy and safe travels of seafarers, including their safe and swift disembarkation, and crew change during the COVID-19 pandemic, as a response to the international organization's recommendations for safe ship crew changes.



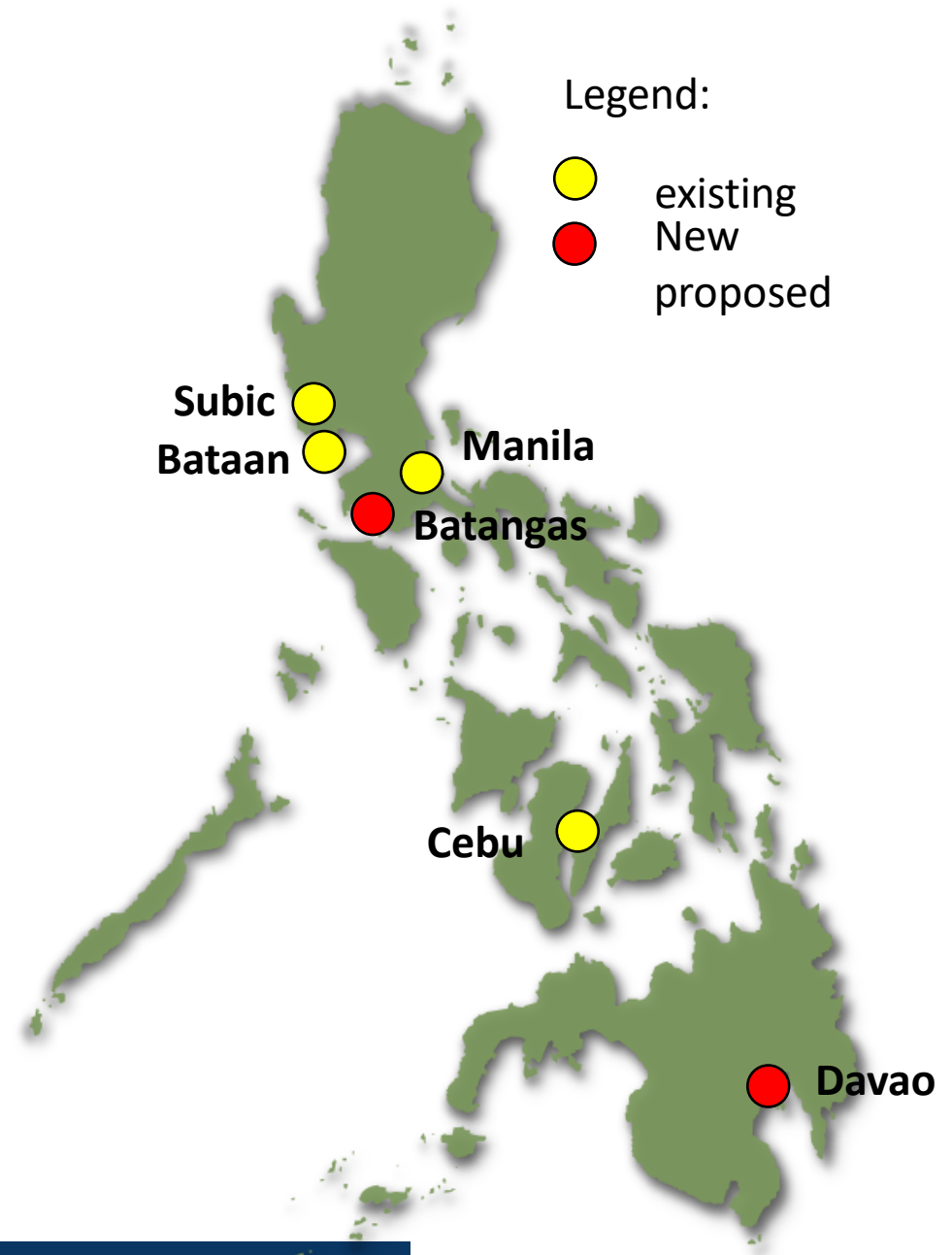


# ACTIONS TAKEN BY THE PHILIPPINES

The DOTr, through its Maritime Sector, opened Ports in **Manila, Subic, Bataan** and **Cebu** as **international hub and gateway ports for crew change.**



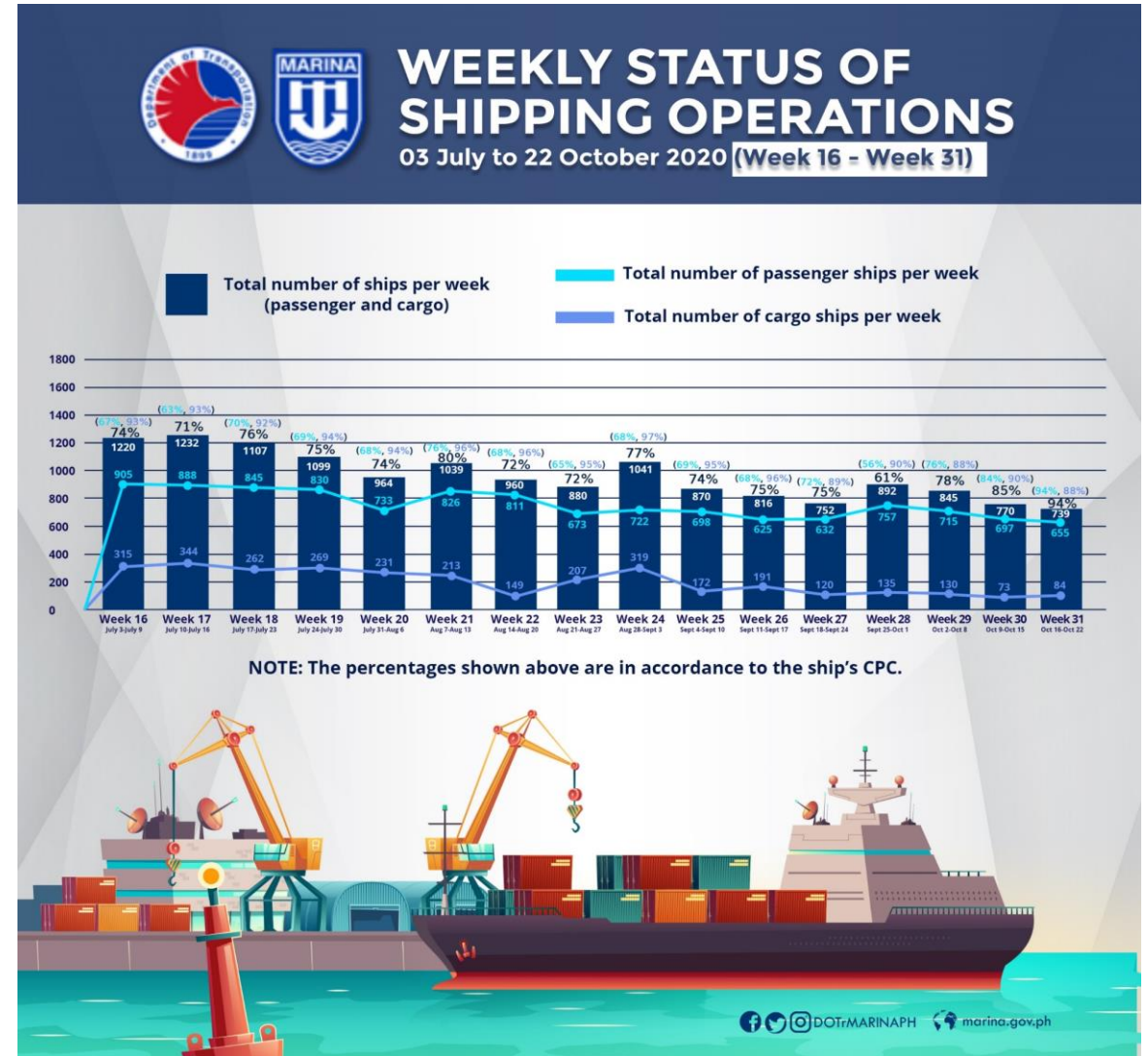
Repatriated a total of **73,078** seafarers as of 16 October 2020





# ACTIONS TAKEN BY THE PHILIPPINES

MARINA continuously monitoring the **Passenger and Cargo Shipping Operations** in areas under Modified General Community Quarantine (MGCQ) and General Community Quarantine (GCQ).



DOT-MARINAPH | marina.gov.ph





**THANK YOU!**